



INNOVATION ANNOUNCEMENT!



Roof Top Blox are *better* blocks... 10 times better!



1 Reinforced Screw Starter Guides

For easier, stronger bracket attachment!



2 Unique Pipe Saddle Design

Neatly holds and aligns piping!

3 Steel Strut Alignment Trough

Locates and aligns strut!

4 Install-from-the-Top Engineering

Install and adjust from just the top side!

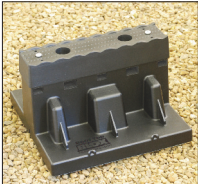
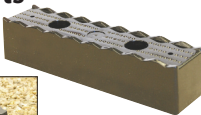


5 Stable Design

Wide footprint with interlocking ends for expandable lengths!

6 Extension Kits

Adds 1-1/2" to Blox height!



7 Cushioned Base

Structural foam insert protects roof membranes!

8 Heavy-Duty, Lasting Construction

UV-resistant resin withstands the elements!

9 Compact & Lightweight

Contractor-friendly 8-pack tote is easy to transport!



10 On-board Pipe Strap

Convenient galvanized strap included!



Roof Top Blox are the perfect solution for supporting piping and equipment on flat commercial roofs. Engineered with contractors in mind, the *Roof Top Blox* system is designed to be quickly installed, expanded, and adjusted from just the top side!

Better Support for:

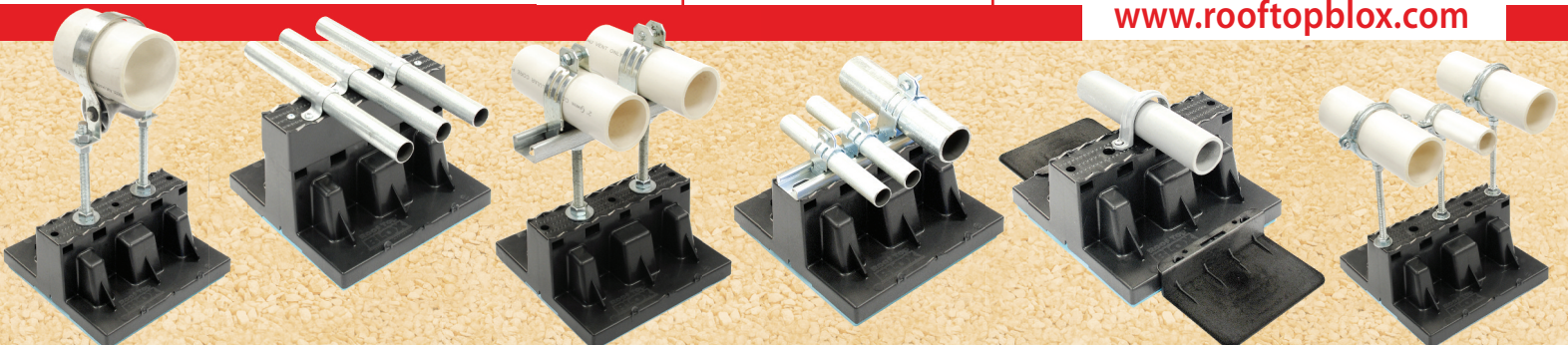
- gas piping
- plumbing pipe
- electrical piping
- refrigeration pipes
- ductwork
- mechanical platforms
- roof walkways



Adjustable Piping Support

US PAT. 7,731,131 CAN. PAT. 2,675,158

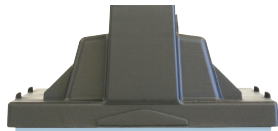
www.rooftopblox.com



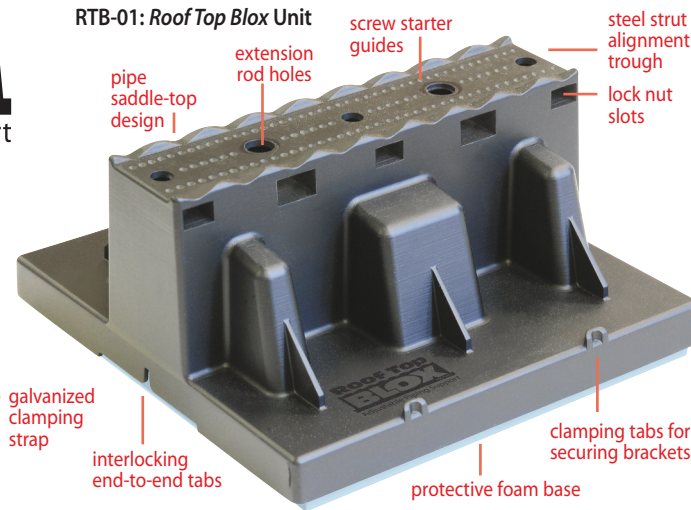
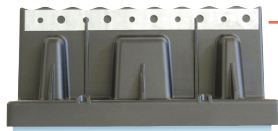
Roof Top[®] BLOX

Adjustable Piping Support

US PAT. 7,731,131 CAN. PAT. 2,675,158



wide, stable design



RTB-01: Roof Top Blox Unit

pipe saddle-top design

extension rod holes

screw starter guides

steel strut alignment trough

lock nut slots

galvanized clamping strap

interlocking end-to-end tabs

protective foam base

clamping tabs for securing brackets

Better by construction. Better by design.

Unique Pipe Saddle Design - Notched saddle-top for orderly piping alignment. Top trough cradles slotted steel strut channel for strut clamping systems and heavier loads.

Reinforced Screw Starter Guides - Indents allow for fast screw location for attaching clamps and straps. Internal structure increases screw-thread grip for added strength.

Install-from-the-Top Engineering - Easy installation and adjustment of 3/8" or 1/2" threaded rods height extenders.

Stable Design - Wide footprint for balanced weight distribution. Interlocking tabs allow end-to-end Blox extension. Securing brackets anchor Blox against wind, water and snow load conditions.

Height Extension Kit - (XTB-02) Features pipe saddle-top design. Use with adjustable extension rods, or directly on top of Blox for 6" height requirements.

Durable Construction - Engineered heavy-duty structural design spreads load evenly over entire base surface. UV-resistant resin ensures a long durable life.

Protective Padded Base - High-density type 4 closed cell structural foam base cushions load to protect commercial roof membrane.

Compact & Lightweight - Stacking 8-pack tote design saves space for warehousing, shipping, and carrying convenience.

On-board Pipe Strap - Every Blox unit includes an on-board, galvanized clamping strap for securing up to 2" pipe.

Roof Top Blox Product Specifications

Body Material	Black UV stabilized Polypropylene Copolymer .100" to .135" wall thickness
Base Material	1" thick by 25psi, type 4 closed cell structural foam
Dimensions & Weight	8-7/8" square by 4-1/2" high, top accessory adds 1-1/2" to height for 6" height requirements, Blox interlock end to end for wide multi-piping platforms. Weight: 1lb per Blox
Load Bearing	Max load per Blox—Single Point Load: 250lbs./113 kg—Dual Point or Strut-Mounted Load: 350lbs./158 kg. Apply STR-04 slotted steel strut channel under heavy loads over 250lbs.
Spacing	Space Blox approximately every 7 feet along all piping.
Pipe Fastening	Screw indents guide fastening screws into special internal engineered thread gripping feature. #10 sheet metal screws recommended. Blox supplied with 3/4" galvanized universal quick clamping strap for up to 2" pipe. Top surface easily adapts to all types of piping clamps, clips, slotted strut and 3/8" or 1/2" threaded rod. All pipe fastening and adjustments done from top side only.
Accessories	1-1/2" Polypropylene top height extender, 10" slotted steel strut, 12" threaded rod, pipe rollers, securing brackets, M-1 adhesive, and primer for M-1 adhesive.
Warranty	5 years Roof Top Blox replacement against manufacturer's defect.
Applications	Blox engineered to install on flat roof surfaces for supporting gas, condensate or refrigeration lines, electrical conduits, ductwork or roof top walkways and mechanical equipment. Rated for temperatures up to 200°F/93°C.

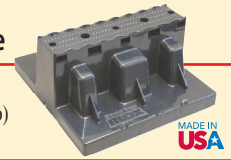


Easy-to-handle 8-pack tote convenience

Distributed by

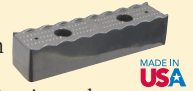
Products Available

RTB-01: Roof Top Blox
(includes clamping strap)
Bundled in 8-pack totes



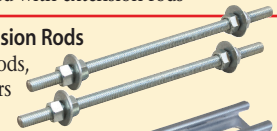
MADE IN USA

XTB-02: 1.5" Blox Height Extension Fastens directly on top of Blox with #10 screws provided or elevated with extension rods

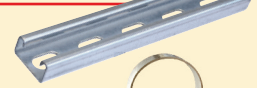


MADE IN USA

ROD-03: 12" Extension Rods
(2) 1/2" threaded rods,
(8) nuts, (4) washers
zinc plated



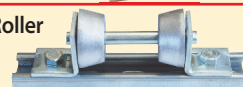
STR-04: 10" Galvanized Slotted Steel Strut Channel



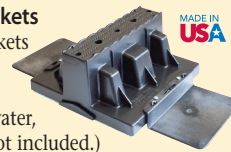
ROL-05: Small Pipe Roller
(aluminum) Supports 1" to 3" pipe



ROL-06: Large Pipe Roller
(aluminum) Supports 4" to 6" pipe (includes strut & mounting screws)



SCB-07: Securing Brackets
(polycarbonate) (2) brackets secure Blox directly to roof with M-1 adhesive. Use brackets for wind, water, and snow loads. (Blox not included.)



MADE IN USA

ADH-12: M-1 Structural Adhesive (gray)
High bond adhesive for all roof membrane systems. Apply directly under SCB-07 brackets — 10 oz. tube bonds 10 pairs of SCB-07 brackets.



PR-13: Primer for M-1 Adhesive
Primer required for bonding to TPO roof systems — 1 pint can is enough to bond 35 pairs of SCB-07 brackets.



Suggested Engineering Specification

Roof top support blocks for gas piping, plumbing, HVAC, conduit, cable tray, and mechanical equipment shall be Roof Top Blox (RTB-01). The support blocks must be designed to eliminate roof penetrations, flashings or damage to roofing membrane. Support body shall be made of recycled UV-resistant Polypropylene Copolymer. Base platform material shall be 1" thick, 25psi, type 4 closed cell structural foam to distribute and evenly cushion loads. Support top surface shall have molded in pipe organizing saddles and strut mounting cradle. The top surface shall also have screw guide indents and engineered internal screw thread gripping feature. Block must accept 3/8" and 1/2" threaded rod (ROD-03) using side entry nut slots to allow fast top side assembly and piping height adjustments. Aluminum rollers (ROL-05 or ROL-06) shall be installed on long piping runs. Securing brackets (SCB-07) and adhesive (ADH-12) recommended for permanently securing Blox into its final installed position, anchoring against wind, rain and snow loads.

Specify with Confidence

Roof Top Blox are manufactured in the U.S.A. Our state-of-the-art facility, strict quality guidelines, and product guarantee assure you and your customers will be 100% satisfied.



7 Main St., P.O. Box 440, Ellington, CT 06029
Phone: 860-979-0345 • Fax: 860-871-9218

www.rooftopblox.com