



REFLECTIVE ROOFING MEMBRANES



SRI of 86

Reduction of heat absorption by the system

Tested according to CSA A123.21-14

Platinum Privilege Warranty for up to 20 years

Contribution to LEED SS Credit 7.2: Heat Islands Effect



1.877.MAMMOUTH
www.soprema.ca



HIGH PERFORMANCE

SOPREMA's High Performance roofing systems are designed with one basic criterion: durability.

In order to achieve this, the base sheets or cap sheets of these roof waterproofing systems include composite reinforcement.

COMPOSITE REINFORCEMENT

The composite reinforcement used in SOPREMA High Performance Systems combines the stability of glass mat and the exceptional properties of non-woven polyester to meet a basic criterion: durability.

Excellent resistance, since it combines the benefits of glass mat (stability) and polyester (elongation and puncture) reinforcements.

Incomparable dimensional stability despite frequent weather variations.


Better wind resistance than a system reinforced with a conventional polyester, whether virgin or recycled.



LEED DATA SHEETS

You can find the LEED data sheets on our products in the *Technical References* Section at www.soprema.ca. These sheets allow you to estimate the contribution of SOPREMA products in obtaining LEED credits.

BENEFITS OF SOPREMA BITUMINOUS MEMBRANES

- Thanks to its viscoelastic properties, bitumen ensures the sustainability of buildings.
 - **Proven waterproofing**
 - **Hydrophobic nature**
 - **Excellent adherence**
 - **Optimal and sustainable mechanical properties**
 - SOPREMA membranes are composed of SBS modified bitumen.
 - Increase in the elasticity and longevity of the membrane.
 - SOPREMA has more than 100 years of experience in the design and manufacture of waterproofing membranes.
- 



SUSTAINABILITY



TOBIAS HOUSE ATTENDANT CARE
TORONTO (CANADA)



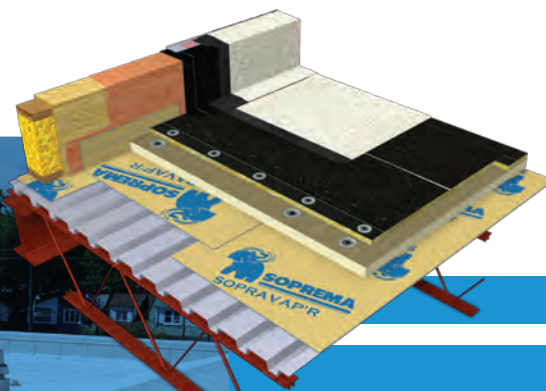
SOPRASTAR

The SOPRASTAR cap sheet membranes reflect the sun rays, which reduces the temperature of the roof system, thus increasing its life expectancy. The use of SOPRASTAR white membranes contributes to the reduction of heat islands effect.

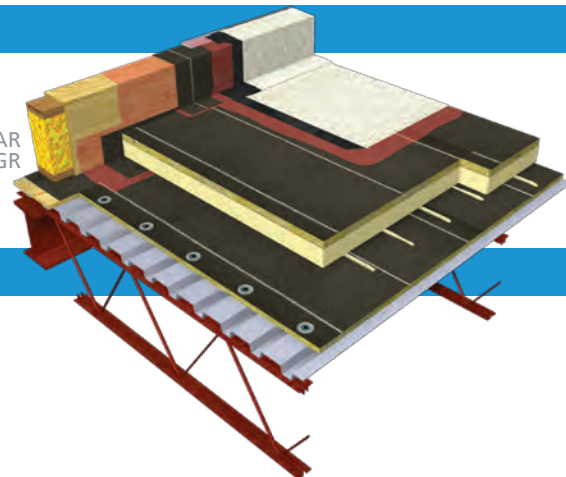
The reflective granules that cover the SOPRASTAR HD GR membranes and the multilayer white film of SOPRASTAR WF membranes protect the elastomeric bitumen from degradation caused by solar heat and UV to preserve its superior flexibility longer. As a result, elastomeric membranes easily adapt to temperature fluctuations, and maintain their performance over time.



SOPRASTAR
FLAM HD GR



SOPRASTAR
STICK HD GR



REFLECTIVE ROOFING MEMBRANES



TOBIAS HOUSE ATTENDANT CARE TORONTO (CANADA)



SRI of 86

GRANULATED MEMBRANES

Cap sheet membranes with a composite reinforcement and covered with highly reflective white granules (SRI of 86)

APPLICATION METHOD
HEAT WELDED

SOPRASTAR FLAM HD GR¹

STARTER SOPRASTAR FLAM HD GR

APPLICATION METHOD
SELF-ADHESIVE

SOPRASTAR STICK HD GR

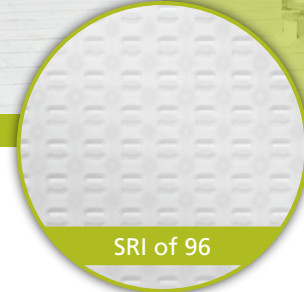
STARTER SOPRASTAR STICK HD GR

APPLICATION METHOD
WITH ADHESIVE OR HOT SEBS BITUMEN²

SOPRASTAR HD GR sanded¹



THE HAZEL HARVEY PEACE ELEMENTARY SCHOOL FORT WORTH (UNITED STATES)



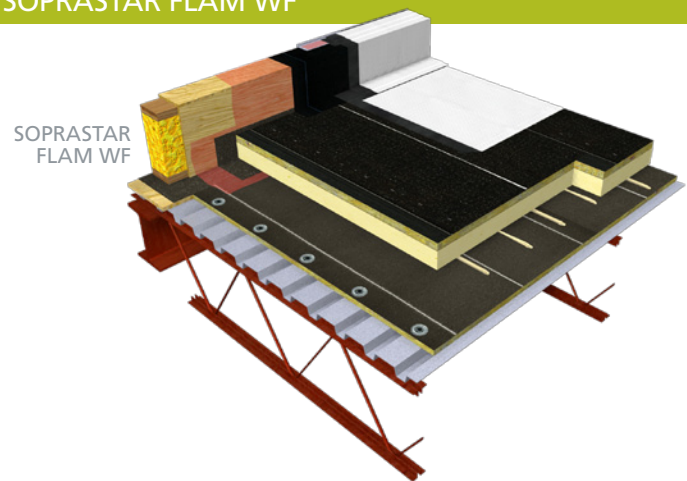
SRI of 96

MEMBRANE WITH MULTILAYER WHITE FILM

Cap sheet membrane with a composite reinforcement and coated with a highly reflective white multilayer film (SRI of 96)

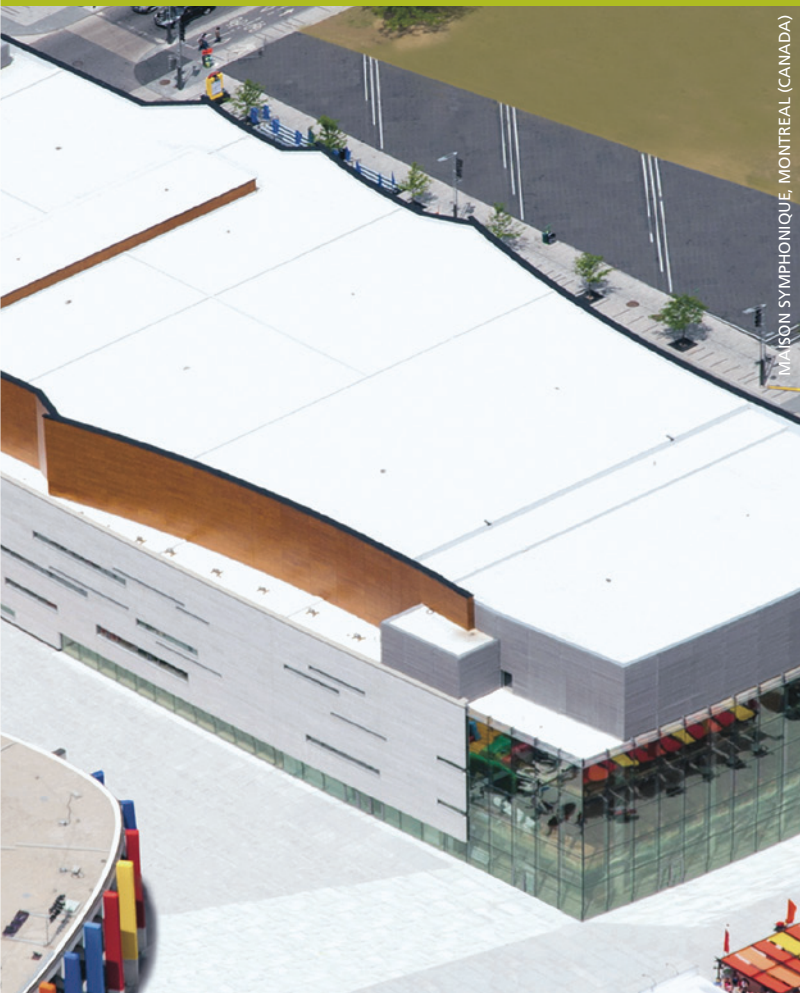
APPLICATION METHOD
HEAT WELDED

SOPRASTAR FLAM WF



¹Fire Rated (FR) cap sheets are also available.

²To learn more about SOPREMA solutions related to adhesives and SEBS hot bitumen, contact your local representative.



BENEFITS

FOR THE BUILDING OWNER

- SRI of 86
- Life expectancy of the membrane potentially extended due to these factors:
 - Reduction of heat absorption in the system
 - Decrease of surface temperature of the roofing system (15° to 20° less than other colours)³
- Stable and permanent white colour (original colour of the granule)
- Superior waterproofing due to the use of SBS modified bitumen membrane
- Contribution to LEED Sustainable Site Credit 7.2: Heat Islands Effect
- Possible resurfacing

FOR THE INSTALLER

- Handling of membranes without significant loss of granules

PLATINUM PRIVILEGE WARRANTY

As a testimony to the durability of High Performance waterproofing membranes, SOPREMA can offer a PLATINUM PRIVILEGE Warranty. This can extend your warranty period to 20 years!



WILSON GARAGE (CANADA)



³ Tests performed at the SOPREMA research and development laboratories.



TESTS AND APPROVALS

SOPRASTAR HD GR AND WF

ASTM D6162

SOPRASTAR products tested in accordance with ASTM D6162 comply with the stringent standards recognized in Canada and the USA. The ASTM D6162 Standard evaluates the performance of SBS membranes with composite reinforcement for building roofing or waterproofing. These high standards are unquestionably a guarantee of quality. Please note that the ASTM D4977 test method of this Standard has confirmed that SOPRASTAR membranes do not lose more than 2 grams of granules when subjected to this brushing test.

CSA A123.21-14⁴

SOPRASTAR systems tested according to CSA A123.21-14 Standard were subjected from 875 to 2,200 cycles, depending on the application method, reproducing the actual dynamic load conditions due to wind on roofing systems.

FM 4470

Products, such as SOPRASTAR, that receive FM approval have all passed a series of tests, including physical properties (hail, foot traffic, etc.), fire resistance and wind uplift tests (static method). Therefore, FM can then insure systems using SOPRASTAR Products.

CGSB 37.56-M (9TH DRAFT)

Canadian General Standards Board (CGSB) is the federal government agency that established this standard. SOPRASTAR membranes, which have successfully met a series of physical and mechanical property tests, meet this required National Building Code standard.

ULC-S107

Underwriters Laboratories of Canada (ULC) is an independent certification and inspection organization performing fire testing on membrane systems to ensure their safety. This certification is very important for a product like SOPRASTAR. Indeed, all roofing membranes must be tested as per ULC-S107 to prove compliance with the National Building Code.



⁴Standards pertaining to SOPRASTAR FLAM HD GR, SOPRASTAR FLAM HD GR FR and SOPRASTAR FLAM WF membranes only.



SOPREMA

| 1.877.MAMMOUTH
www.soprema.ca